

**Product Information Sheet SNG 480 Watt TOPCon Technology**

**HC MONO**  
**480 Watt**

Highest quality with our cells  
16 MBB TOPConTechnology

**Quality and Safety**



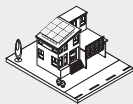
Industry-leading power output warranty  
30 years / 86 %



20-year warranty on materials  
& workmanship

- ✔ Premium quality
- ✔ 100 % EL testing
- ✔ Low weight
- ✔ Efficiency up to 22.17 %
- ✔ Power output range 480 Wp
- ✔ Mechanical load up to 2400 Pa
- ✔ IEC EN 61215-1,-1-1,-2 IEC EN 61730-1,-2
- ✔ Positive power tolerance -0/+4.9 W

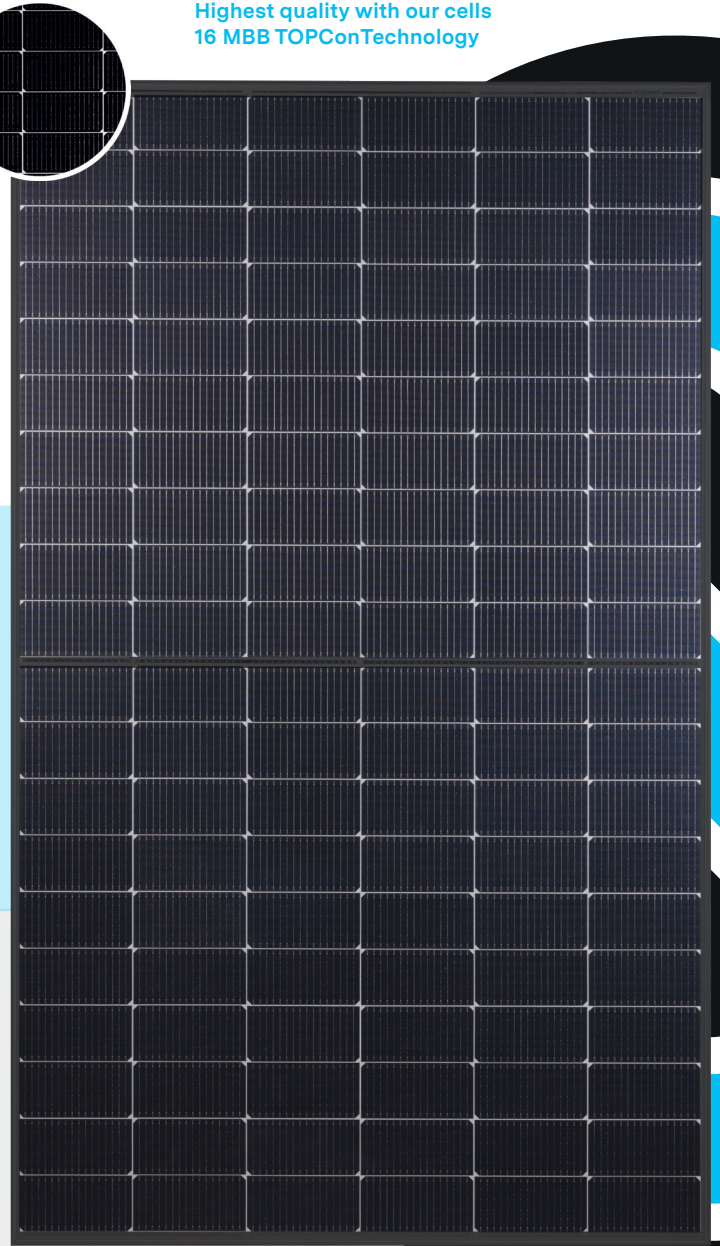
- ✔ **Anti-PID Guarantee**  
Minimizes the risk of degradation caused by PID phenomena by optimizing cell production technology and material control.
- ✔ **Multi-busbar Technology**  
Higher performance, higher reliability, and greater (electrical) resilience.



On-grid residential roof-tops



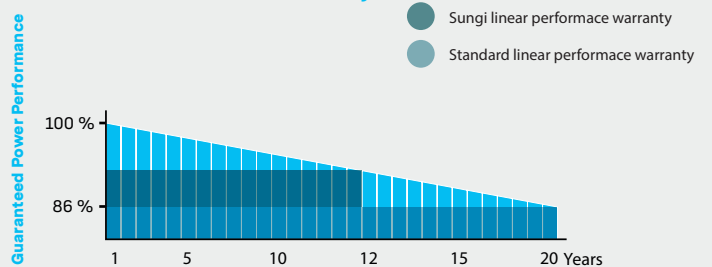
On-grid commercial Industrial roof-tops



**Complete System and Product Certifications**

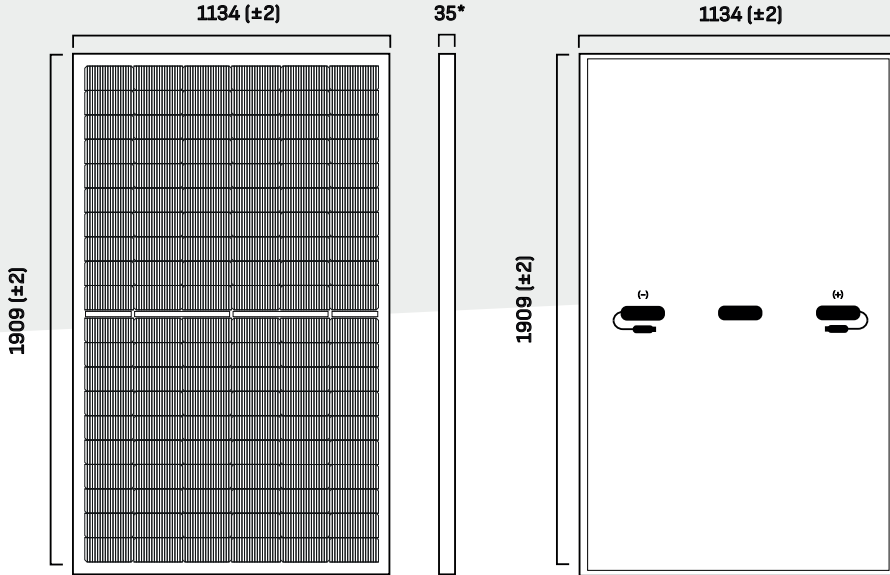
IEC 61215 (2021), IEC 61730 (2023), IEC 61701, IEC 62716  
 ISO 9001:2015: Quality Management System  
 ISO 14001:2015: Environmental Management System  
 ISO 45001:2018: Occupational Health and Safety Management System

**Premium Performance Warranty**



**22.17 %**  
Max Module Efficiency

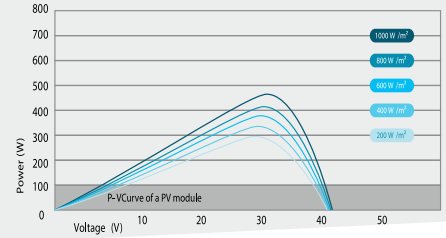
**ENGINEERING DRAWINGS (mm)**



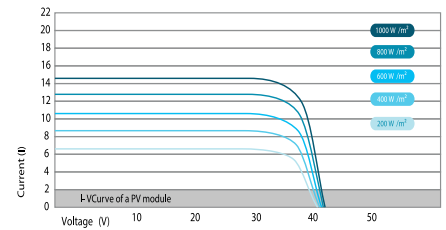
**ELECTRICAL PERFORMANCE & TEMPERATURE**

**DEPENDENCE | SNG - 480**

Power-Voltage Curves



Current-Voltage Curves



MODULE TYPE	SNG-480 W
Testing Conditions	STC <sup>(2)</sup> / NMOT <sup>(3)</sup>
Maximum Power at STC (Pmax)	480 Wp
Maximum Power Voltage (Vmp)	35.13 V / 33.40 V
Maximum Power Current (Imp)	13.67 A / 10.88 A
Open-Circuit Voltage (Voc)	42.86 V / 40.70 V
Short-Circuit Current (Isc)	14.39 A / 11.63 A
Module Efficiency (%)	22.17 %

ALL MODULES DATA	
Operating Temperature (DC)	- 40 °C to + 85 °C
Maximum System Voltage	1500 VDC
Maximum Series Fuse Rating	25 A
Power Output Tolerance <sup>(1)</sup>	- 0 / + 4,9 W
Temperature Coefficients of Pmax	- 0.322 % / °C
Temperature Coefficients of Voc	- 0.22% / °C
Temperature Coefficients of Isc	+0.033 % / °C
Nominal Operating Cell Temperature (NOCT)	45 ± 2 °C



**TECHNICAL SPECIFICATION**

Cell type	TOPCon Technology (182x91 mm)
Number of cells	120 (2x60)
Dimensions	1909x1134x35* mm
Weight	22.3 kg
Encapsulant	POE(Polyolefin Elastomer) / Ethylene vinyl acetate (EVA)
Front Glass	AR Coated, Tempered solar glass 3.2 mm
Back	Composite polyester film
Frame	Black Anodized aluminum frame with twin-wall profile and drainage holes
Junction Box	IP68 with 3 Bypass diodes
Cables & connectors	Solar cable 4 mm <sup>2</sup> , length 1100 mm; MC4 compatible connectors

**PACKAGING CONFIGURATION**



**40' Container**

- 31 pcs per pallet
- 26 pallets
- 806 total pcs

Testing Conditions STC <sup>2</sup> /NMOT <sup>3</sup>	Irradiance 1000 W/m 800 W/m	Module Temperature 25 °C 20 °C	AM 1.5 Wind Speed 1m/s	Fire Rating Class 1
---	-----------------------------------	--------------------------------------	------------------------------	------------------------

<sup>(1)</sup> Measurement Tolerances : Pmax (± 3 %), Isc & Voc (± 3 %)

<sup>(2)</sup> STC (Standard Testing Condition) : Irradiance : 1000 W/m<sup>2</sup>, Cell Temperature: 25 °C, AM : 1.5

<sup>(3)</sup> NMOT (Nominal Operating Module Temperature) : Irradiance : 800 W/m<sup>2</sup>, NMOT Ambient Temperature: 20/25 °C, AM : 1.5, Wind Speed : 1 m/s

\*or customized

Specifications included in this datasheet are subject to change without notice. SUNGI SOLAR reserves all the rights to final integrations.